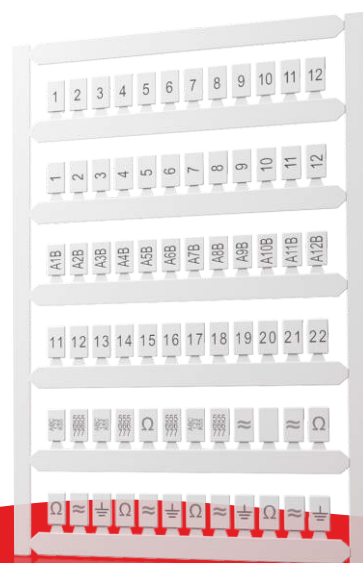
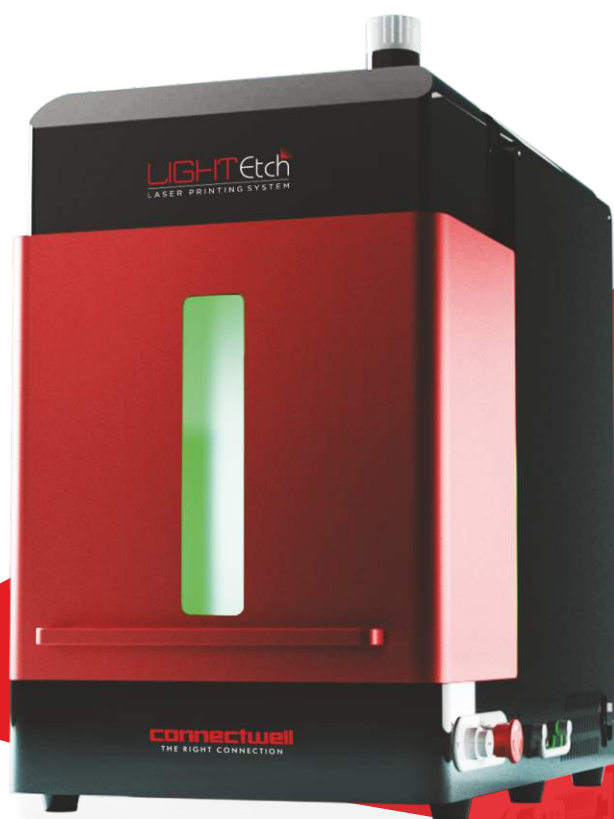


LIGHT Etch

LASER MARKING SYSTEM

THE SPEED
YOU DESIRE

THE DURABILITY
YOUR DESERVE



connectwell
THE RIGHT CONNECTION

LIGHT ETCH LASER MARKING SYSTEM

With the ever-growing and ever-changing needs of customers, the last thing on your mind should be markers for your Terminal Blocks. Connectwell's Light Etch Laser Printing System is the ultimate solution that answers all your needs. It not only prints extremely durable markers, but it also does that at the speed of light.

This Laser Printing System can become your production system's workhorse with zero consumables and no maintenance costs delivering a guaranteed life span of 10K hours of superior performance. It prints markers that are precise, consistent, and resistant to mechanical, chemical, and environmental factors.

All this, so that you may rest easy and focus on things that matter to your business.





SPEED IS ITS SECOND NAME

 Can print 50 characters every second

 Equal to having 16 traditional plotters



△ WORKHORSE LIKE NO OTHER

-  Lowest Production Cost
-  Zero Consumables
-  No Moving Parts
-  10K Operating Hours Guaranteed



See the
LIGHTETCH
system
in action

CONNECTWELL MC SERIES MARKERS



PRECISE

- Laser Etched - No Contact
Perfect Print Guarantee
- No Ink means No Print Variation



PERMANENT

- No Ink - Forever Etched Print
- Polycarbonate UV Stabilized Base Markers
- Resistant to environmental,
mechanical and chemical abrasion



EASY

- Print Entire Marker Cards with
multiple marker strips at a go
- No messy and flammable inks
to stock or handle



See how superior
MC SERIES MARKERS
truly are

CW FINE MARK

Fast - Intelligent - Easy



Connectwell Light Etch is driven by a smart, easy and quick software system to rapidly configure and print markers.

CW FINE Mark System allows for easy selection of markers and quick character input so that the time spent on print configuration is minimized and your production output is maximized.



See **CW FINE MARK**
with **LIGHTETCH**
Laser Marking System
in action

WHY CHOOSE CONNECTWELL LIGHT ETCH LASER PRINTING SYSTEM

Traditional Ink Plotter	Light Etch by Connectwell
Slow Printing - More than half a minute to print 100 characters	Super Fast - Prints 100 Characters in 2 seconds
Outdated Mechanical Ink Based Contact Printing	New Age Non-Contact Laser Etching
Needs consumables like Ink, Ribbons, Pens etc	Zero Consumables Needed
Multiple Mechanical Moving Parts Make it Prone to Failure	No Moving Parts Ensure a Maintenance Free Working Life
Ink Based Print can smudge and fade	Etched Print that can withstand mechanical, environmental and chemical abrasion
Noisy, especially when multiple machines work together	Absolutely Silent, as there are no moving parts

Ordering & Technical Details:

Light Etch Laser Marking System		MC Series Markers			
Part Number	CLM011	Material	Polycarbonate		
Laser Type	Optical Fibre	Standard Pack	10 Cards		
Wavelength	1070 µm	Rows per Card	6 Rows		
Cooling System	Air	Part Number	Tags	Height	Width
Power Consumption	700 W	MC5	84	1.2	4.45
Power Supply	220vAc/50Hz/6A	MC6	72	1.2	5.45
Dimensions (LxWxH)	710 x430 x 750 mm	MC8	48	1.2	7.45
Weight	38 kgs	MC10	42	1.2	9.45
Operating Temperature	20-30°	MC12	36	1.2	11.45
		MC16	24	1.2	15.45
* MC Series Marker Cards are available in printed form for standard 1 to 10 print. Please use suffix /H/1-10 for Horizontal print and suffix /V/1-10 for Vertical print		MC2	72	1.2	5.75
		MC2B4	72	1.2	5.45
		MC3.5	90	1.2	3.25

