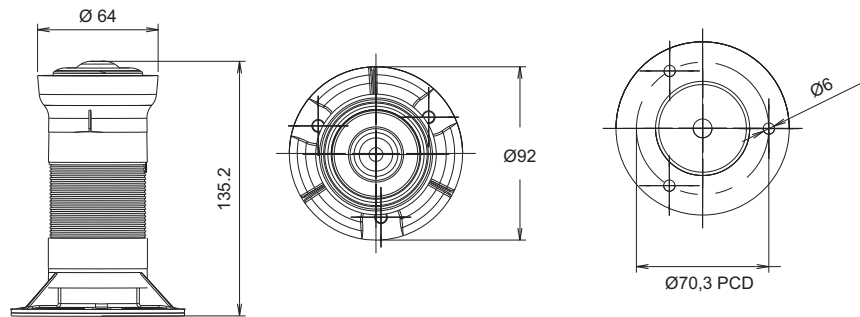



# Internationally Approved **LED SIGNALING UNITS**

- Sleek & stackable design.
- SMD LED technology.
- Continuous, Flashing and Rotary Integrated LED light modules available.
- IP 65 protection .
- Wide voltage range from 12V AC/DC to 240V AC.



# Siren Flasher



Emergency Siren with LED Flasher		
Housing Colour	Voltage	Part No.
	240V AC	IA12M34R240A
	110V AC	IA12M34R110A
	24V DC	IA12M34R024D

## Technical Specifications

Rated Voltage	24V DC, 110V AC, 240V AC
Limit of Operating Voltage	-15% to +10% of rated voltage
Type of Sound	Single tone, Wail and yelp signals with cycles 150-250/min
LED Flasher	Red Colour
Light Intensity	100 LUX
Sound Output	100 db
Surge	2 kV
EMI-EMC	2 kV
Operating Temperature	-25°C to +65°C
Storage Temperature	-30°C to +70°C
Degree Of Protection	IP 65
Power Consumption	<5W
Polarity Protection	Provided
Insulation Resistance	1 Mohm
Contact Terminal	Red & Black Wire with L=50mm (Change as per customer req.)

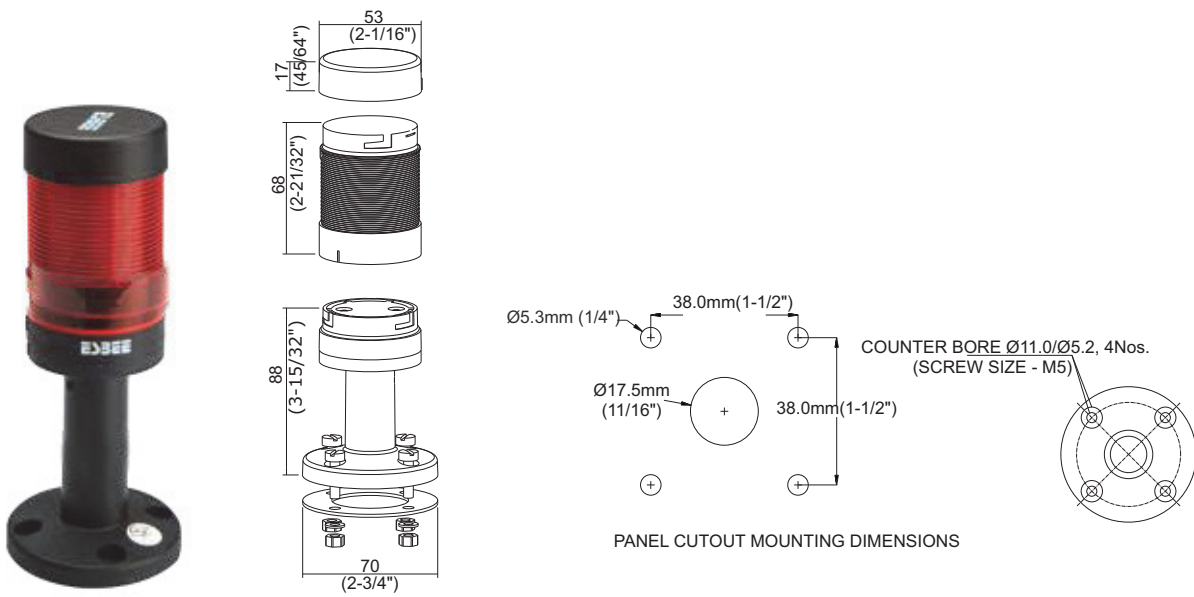
All dimensions are in mm

# Tower Lights

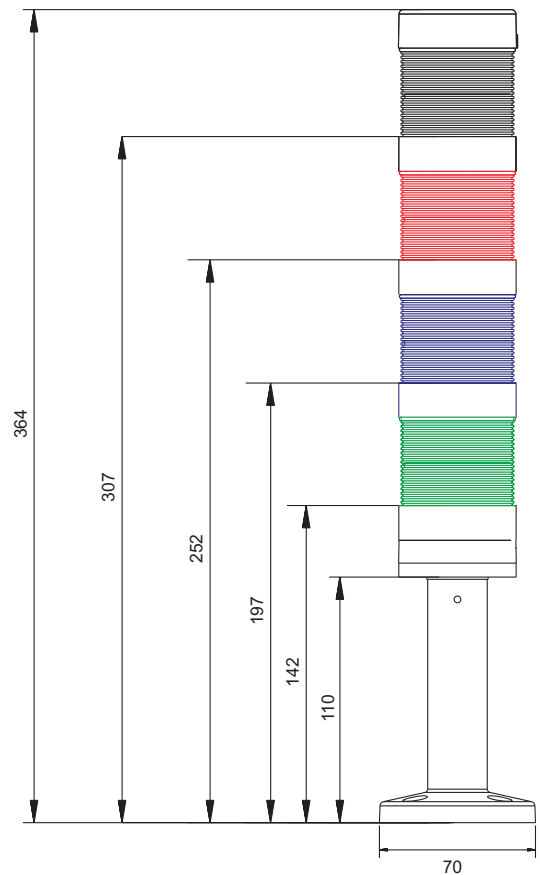
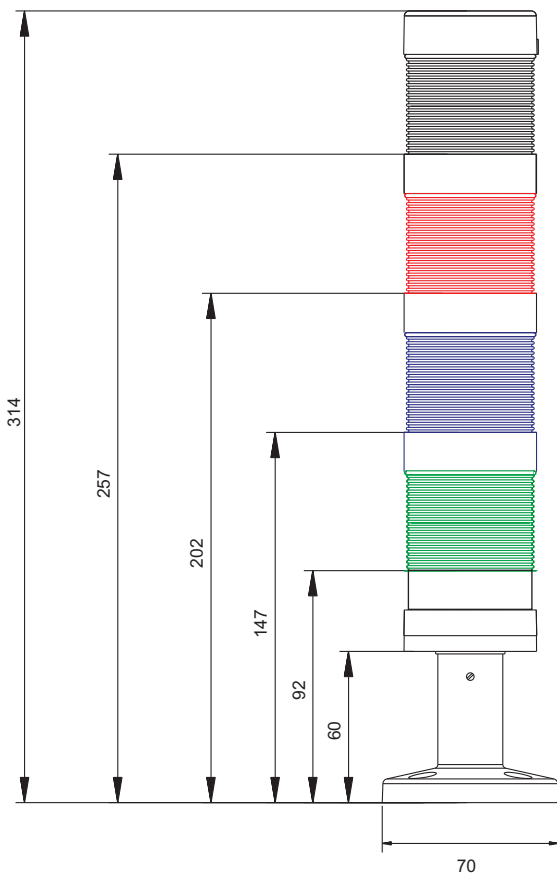
Choose Different **COLOURS**  
And Set Your Own Combo



- Sleek & stackable design.
- SMD LED Technology for uniform & bright illumination.
- Flexibility to upgrade from single LED unit to multiple (max 4) LED units.
- Optional feature of Buzzer with dual sound mode-continuous & intermittent with 80db output.
- Different Mounting options like Base mounted, L clamp, Wall mounted, Swiveling base.



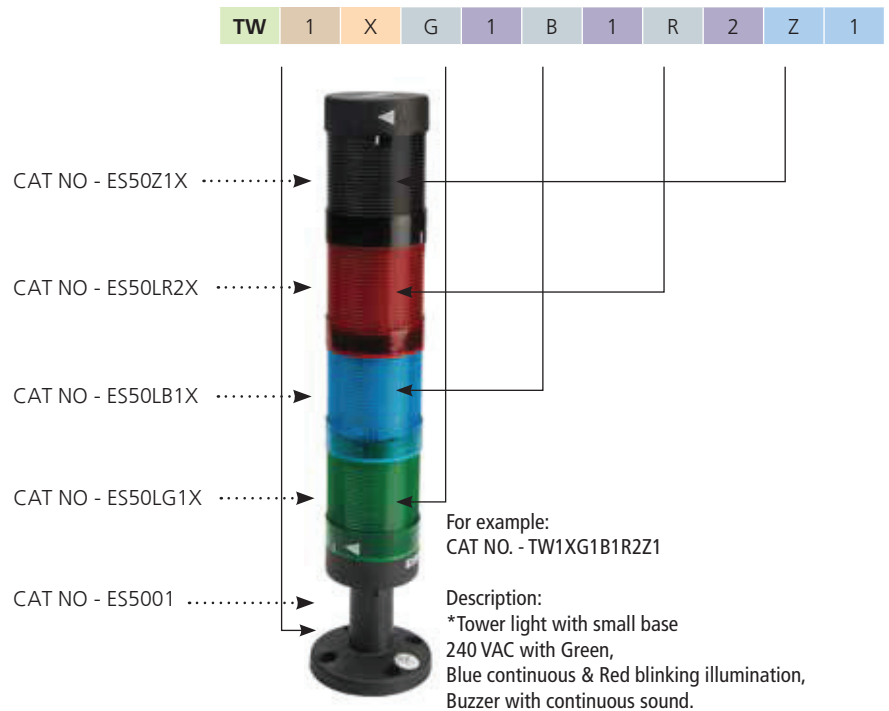
## Dimensional Details



All dimensions are in mm

# Selection Decoding

Description		Code
Tower Light		TW
Base	Small Base (SB)	1
	Big Base (BB)	2
Voltage	240V AC	X
	110V AC	W
	24V AC/DC	U
	12V AC/DC	T
Unit Colour	Red	R
	Green	G
	Yellow	Y
	Amber	A
	Blue	B
	White	W
Luminous Mode	Continuous	1
	Blinking	2
	Revolving	3
Buzzer*	Continuous	Z1
	Intermittent	Z2



# Most Popular Combinations

Single Stack	Double Stack	Three Stack	Four Stack
Tower light without buzzer - 24 VAC/DC			
TW1UR1	TW1UR1G1	TW1UR1A1G1	TW1UR1G1A1B1
Tower light without Buzzer - 240 VAC			
TW1XR2	TW1XR1G1	TW1XR1A1G1	TW1XR1G1A1B1
Tower light with Buzzer - 24 VAC/DC			
TW1UZ1	TW1UR2Z2	TW1UR1G1Z1	TW1UR1A1G1Z1
Tower light without Buzzer - 240 VAC			
TW1XZ1	TW1XR1Z1	TW1XR1G1Z1	TW1XR1A1G1Z1

## Tower Light Base Selection



Base Type	Base Height	Part code
Small	60 mm	ES5001
Big	110 mm	ES5002

## Buzzer Lens Selection



Buzzer Colour	Voltage	Part code sound mode	
●		Continous	Intermittent
	012V AC/DC	ES50Z1T	ES50Z2T
	024V AC/DC	ES50Z1U	ES50Z2U
	110V AC	ES50Z1W	ES50Z2W
	240V AC	ES50Z1X	ES50Z2X

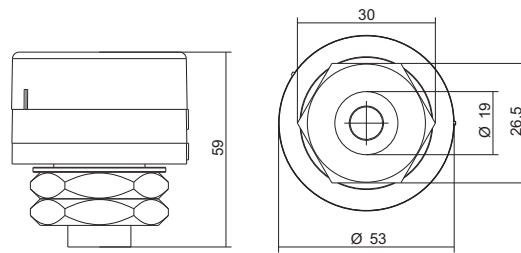
## Luminous Lens Selection



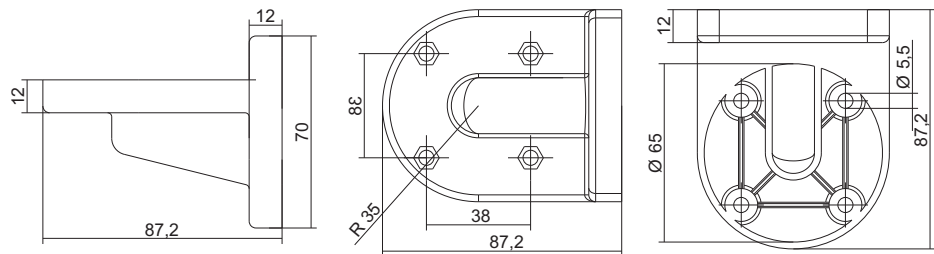
Tower Light Lens popular configuration				
Housing Colour	Voltage	Part code Luminous Mode		
		Continous	Blinking	Revolving
●	012V AC/DC	ES50LR1T	ES50LR2T	ES50LR3T
	024V AC/DC	ES50LR1U	ES50LR2U	ES50LR3U
	110V AC	ES50LR1W	ES50LR2W	ES50LR3W
	240V AC	ES50LR1X	ES50LR2X	ES50LR3X
●	012V AC/DC	ES50LG1T	ES50LG2T	ES50LG3T
	024V AC/DC	ES50LG1U	ES50LG2U	ES50LG3U
	110V AC	ES50LG1W	ES50LG2W	ES50LG3W
	240V AC	ES50LG1X	ES50LG2X	ES50LG3X
●	012V AC/DC	ES50LB1T	ES50LB2T	ES50LB3T
	024V AC/DC	ES50LB1U	ES50LB2U	ES50LB3U
	110V AC	ES50LB1W	ES50LB2W	ES50LB3W
	240V AC	ES50LB1X	ES50LB2X	ES50LB3X
●	012V AC/DC	ES50LY1T	ES50LY2T	ES50LY3T
	024V AC/DC	ES50LY1U	ES50LY2U	ES50LY3U
	110V AC	ES50LY1W	ES50LY2W	ES50LY3W
	240V AC	ES50LY1X	ES50LY2X	ES50LY3X
●	012V AC/DC	ES50LA1T	ES50LA2T	ES50LA3T
	024V AC/DC	ES50LA1U	ES50LA2U	ES50LA3U
	110V AC	ES50LA1W	ES50LA2W	ES50LA3W
	240V AC	ES50LA1X	ES50LA2X	ES50LA3X
●	012V AC/DC	ES50LW1T	ES50LW2T	ES50LW3T
	024V AC/DC	ES50LW1U	ES50LW2U	ES50LW3U
	110V AC	ES50LW1W	ES50LW2W	ES50LW3W
	240V AC	ES50LW1X	ES50LW2X	ES50LW3X

All dimensions are in mm

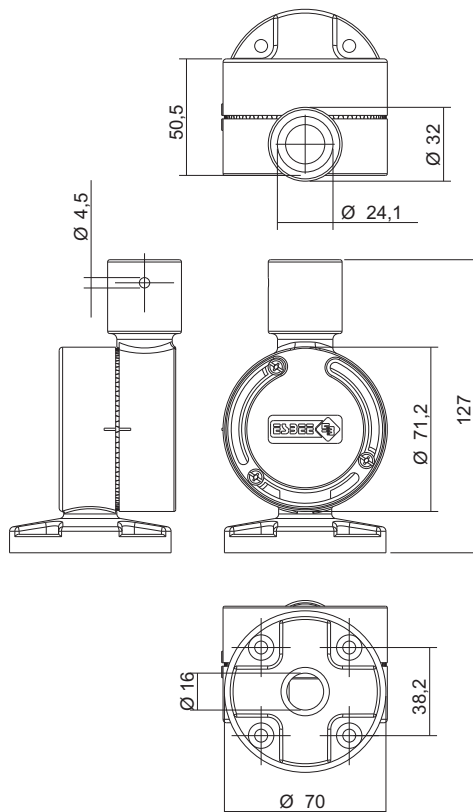
## Tower light with different Mountings



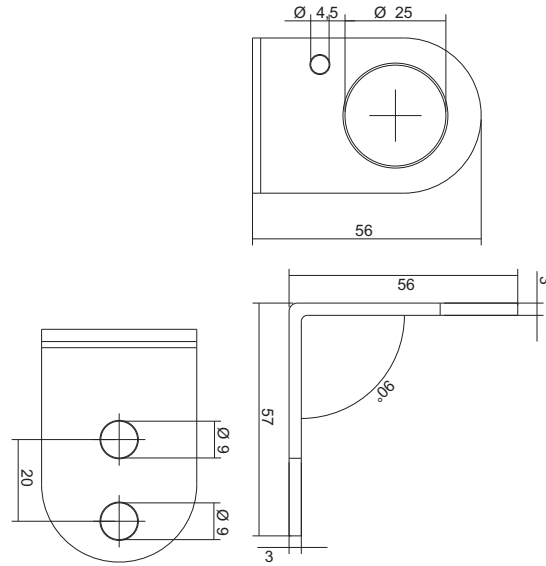
Accessories	Part Code
Base mounted	ES60000



Accessories	Part Code
Wall mounted bracket	ES122012A



Swiveling	
100 mm	ES60004
200 mm	ES60006
400 mm	ES60010
500 mm	ES60012
800 mm	ES60018
1000 mm	ES60022



L clamp	
100 mm	ES70004
200 mm	ES70007
400 mm	ES70010
500 mm	ES70012
800 mm	ES70018
1000 mm	ES70022

## Technical Specifications

Outer diameter	Ø50mm
Degree of protection	IP65 & NEMA (1   2   3   3R   4   4X   12   13)
LED type	SMD
Lens colour	RED / GREEN / AMBER / BLUE / WHITE/ YELLOW
Luminous mode	Continuous, Blinking & Revolving
LED Life	0.1 million burning hours
Buzzer colour	Black
Buzzer sound level	80dB ± 5dB at 1 meter
Sounding mode	Continuous & Intermittent
Voltage range	12 V AC/DC, 24V AC/DC, 110V AC, 240V AC
Limit of operating voltage	±10% of rated voltage
Operating Frequency	50 / 60 Hz
Operating Temperature	-25°C to 65°C
Storage Temperature	-30°C to 70°C
Operating Torque	0.8 Nm
Wire Terminals	Wire size (AWG) 20-16 / 0.5 mm <sup>2</sup>
Flash Rate (Time / min)	±5% 60
Surge test	2 KV
HV test for 60 sec.	1.5 KV
Current rating	40-60mA for 12V AC/DC & 24V AC/DC 10-20mA for 110V AC & 240V AC

Note : \*For customized base please be in touch with our sales team.

All dimensions are in mm